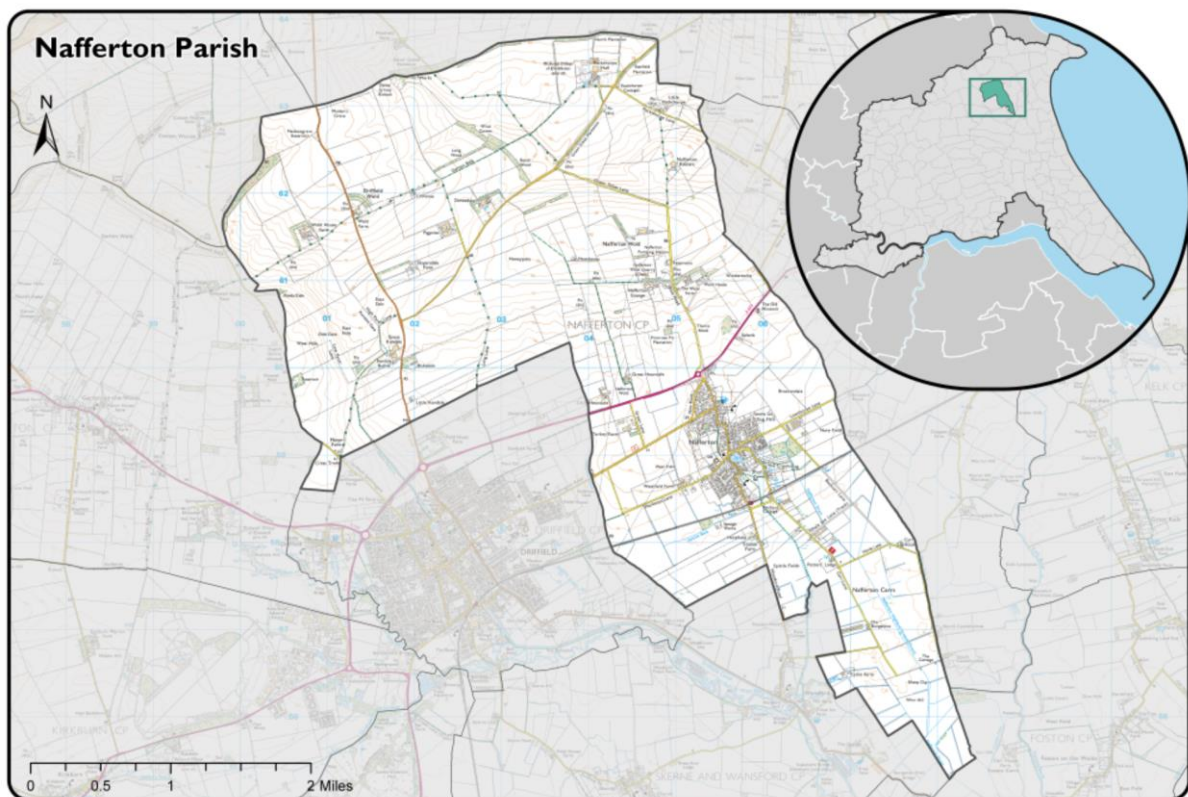


Nafferton Parish Council
AGM 2023

Chairs report of the year 2023 to 2024

General update of the Parish Council

The parish of Nafferton covers an area of circa 32 square miles or 3,074.75 Hectares with a population density of 0.8 persons per Hectare, and serves circa 2500 residents with a mean age of 44 years (ONS 2011 survey).



Nafferton Parish Council (NPC) comprises of 13 councillors with no current vacant positions. Attendance at monthly meetings, held at Nafferton Recreation Club is generally healthy with no meetings not meeting quorate requirements. Since the last AGM three Councillors have joined Nafferton PC, Councillor, Tagg, Waites, Wild.

All meetings continue to follow the East Riding of Yorkshire Councils code of conduct and standing orders as set by East Riding Northern Lincolnshire Local Councils Association (ERNLLCA) whom Nafferton PC is a subscribing member.

Area updates

The Mere

No significant changes to the maintenance of the mere is present in the 23-24 report. A gate has been installed in the horsewash for public safety. Continuing current issues facing the mere include planning applications to crown or removal of two tree's on the island and a crown lift of the tree upon the viewing platform on Priestgate. Councillor Tait is undertaking the commissioning research for an ecology report of the mere which is intended to give impartial and constructive direction to support all wildlife present.

Playground

Due to the investment of £55,000 in the 2022-23 reporting period no significant cause for concern or issue is present in regard to the playground. The fence, rubber matting still present maintenance issues yet as reporting in the 2024 playground inspection, only minor recommendations are present.

Bus shelter & Public Access Building

The structure of the Bus shelter, while low maintenance, continues to require periodic painting and general cleaning. No major issues have been noted in the last year yet planning should be started for the maintenance of the roof. The public access building remains largely unchanged since the last report.

The Recreation Club and clubhouse

All councillors of Nafferton PC are by default trustees of the Rec club and Clubhouse by their acceptance of office. The separation of accountability cannot be removed by a councillor due to the 2014 transfer to thre PC.

The "Clubhouse" having been fully renovated is now regularly used by various community and sporting clubs complimenting the facilities provided by the REC Club and the PC.

The Rec Club continues to provide value for money services for the community and having recently completed a financial overhaul is now in a healthier position and requires less support from the PC in terms of payment of staff wages (Cleaner / events manager) yet the contract of employment at this time remains with Nafferton PC.

Allotments

A representative from the allotment holders, who is not a PC member should be established to gather feedback to the PC and ensure continual improvements moving forward.

General update

Since the last AGM, 3 complaints have been received by ERYC standards committee relating to Nafferton PC councillors. During the tenure of this chair over the previous 5 years the cumulative total of complaints received by ERYC is totalled at 3. Feedback given from ERYC has recommended that all councillors are reminded of the code of conduct and standing orders of the PC.

Finally, after 5 years as your Chairman of the Parish Council and numerous more as a councillor i have taken the decision to step down as Chair from the May 2024 meeting. The decision has not been easy nor taken lightly, however. The period as your chair has been immensely rewarding with significant developments having taken place during my tenure. However, without the constant support and advise of our Clerk and chairman team, Steve, Cathy and not forgetting the support from all councillors, the tenure would not have been as smooth. To you all, thank you for your support and trust placed in me.